



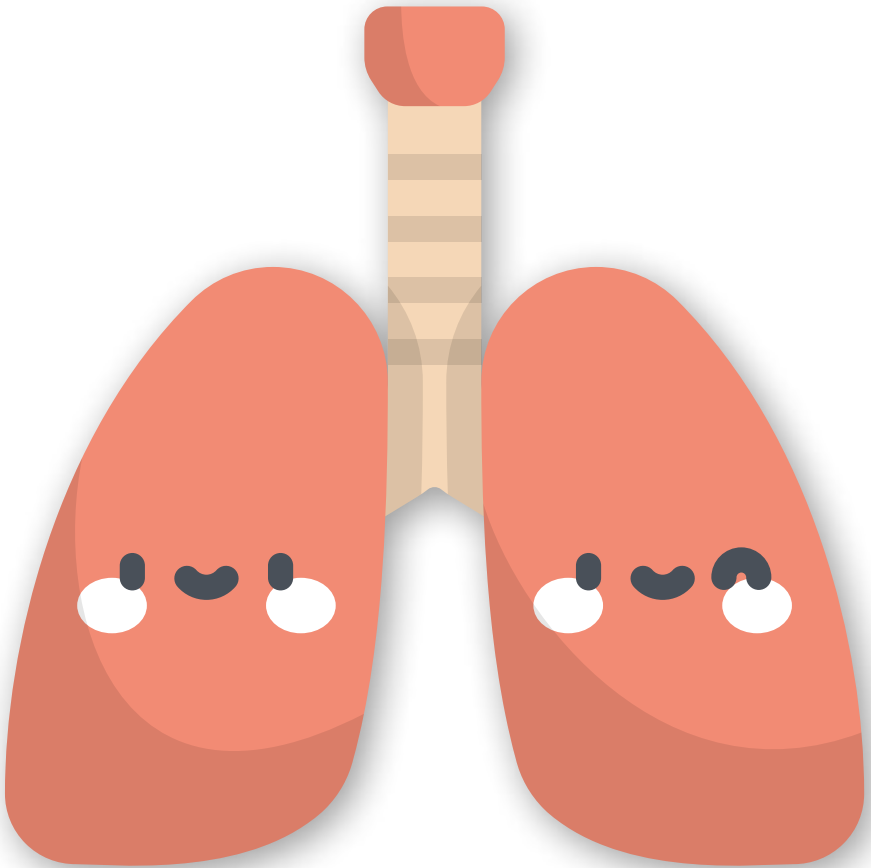
CHU Sainte-Justine

Le centre hospitalier
universitaire mère-enfant

Université 
de Montréal

Overnight Oximetry Test

Information for parents



The doctor asked for an overnight oximetry test for you kid.

This leaflet explains what the test is and gives you the essential information to complete the test adequately

WHAT IS AN OVERNIGHT OXIMETRY?

It consists in a recording that is done during the night with a little portable device called "saturometer". This device is used to verify the percentage of oxygen in the blood and the heartbeat. We are asking for a minimum of 6h of recording.

This test addresses the paediatric clientele because it helps detect, diagnose, treat and prevent respiratory diseases for kids.

For the security of your kid, avoid placing the device on the bed or above it so that it reduces the risk of falling down on the ground. Place it next to the bed or on the ground so that you can prevent any accident.

HOW TO INSTALL THE SATUROMETER?

1. Link the oximetry device to the saturometer and connect it to an electric outlet.
2. Install the sensor (connected by a wire to the device) to either a finger, a toe or the foot.
 - * It is preferable to install it on a toe because it reduces the chances that the kid will get rid of the sensor by accident. (On the foot or toe, you can put on a sock to stabilize the sensor). There are 2 types of sensors : the nurse will choose the appropriate one for you.
3. Press on the button (start) to begin the recording:
2 numbers should appear on the screen:
 - Number on the top (%) = saturation
 - Number below = heartbeat

You can go on the website to see the procedure:
<http://chusj.org/oxymetrie/video>



HOW TO INTERPRET THE ALARMS?

Some visual and auditive alarms are set up so that they do not disturb your kid while he/she is sleeping. They consist of the data of the saturometer; that is the saturation and the heartbeat. The nurse who will give you the device will set up these parameters before you leave. The nurse will also show you what to do if one of these alarms go off.

This is how you should procede:

The alarms can be triggered for different reasons. For example:

- If the sensor is detached : plug it to the cable
- If the battery of the device is weak: be sure that the device is well plugged to the electric outlet
- If the numbers indicating the saturation or the heartbeat are not normal: watch your kid, take the appropriate measures to correct the situation according to the safety instructions that were given to you.

IMPORTANT

You must complete the «*Feuille d'observation pour oxymétrie*» during the test. The information that you provide can be very important for the pulmonologist when he/she will analyse the results of the overnight oximetry test.



- In the box called "Activités", during the test, you can write any relevant comments such as: the kid is crying, drinking, agitated, snoring, going to the bathroom...
- Do not forget to write the time when you started the recording and when you finished it too (when you closed the device)

WHERE CAN YOU GET THE DEVICE?

In the weeks following the prescription of the overnight oximetry test by the doctor, you will receive a call from a nurse who will give you more information about the place where you will have to go to get the device. You will have to come at the hospital or at a CLSC to get it

BRINGING BACK THE DEVICE

You must bring back the device the morning after the test before 10 am at the same place where you came to take it.

Sainte-Justine CHU, 3175, chemin de la Côte-Sainte-Catherine,
Montréal (Québec), H3T 1C5

CHU Sainte-Justine

3175, chemin de la Côte-Sainte-Catherine
Montreal (Quebec) H3T 1C5
Telephone : 514-345-4931

chusj.org

WHEN WILL YOU RECEIVE THE RESULTS OF THE OVERNIGHT OXIMETRY TEST?

If the request comes from the pulmonology clinic:

You will receive the results at your next medical appointment with the pulmonologist at CHUSJ's pulmonology clinic.

If the request comes from outside of chusj:

The doctor who made the request or another healthcare professional will communicate the results to you depending on the situation. He/she will ask you to schedule an appointment.

NOTES

For any question about the saturometer, you can call us at:

- Service de liaison/consultation réseau : (514) 345-4720

For any other questions about the overnight oximetry test, you can call the nurses of the Pulmonology Clinic from Monday to Friday between 9 am to 4 pm, or you can leave a message if they are not available.

- Pulmonology Clinic : (514) 345-4931 extension 3900 or 2767

Conception

Méganne Hamelin, étudiante B. Sc.
Faculté des sciences infirmières
Université de Montréal

Collaboration

Julie Lavoie inf.
Josée Lamarche, inf., Bach. Sc., M.A.P.
Marie Lise Lacombe, inf.
Julie Dionne, inf. B. Sc.
Tue-Chieu Mai, étudiant Inf B. Sc.

Graphic Design

Norman Hogue

Illustrations

Flaticon

Printing

Imprimerie du CHU Sainte-Justine

© CHU Sainte-Justine

F-4937A GRM 30006685 (Rev. 10-2019)