

## Corrective spinal brace

*This brochure is intended for children and their family.*

Orthosis delivered on: \_\_\_\_\_

Orthotist: \_\_\_\_\_

Type:  Bivalve  
 Anterior or posterior opening

Worn:  All day  
 All night  
 Other: \_\_\_\_\_

### Personal notes

---



---



---



---



---

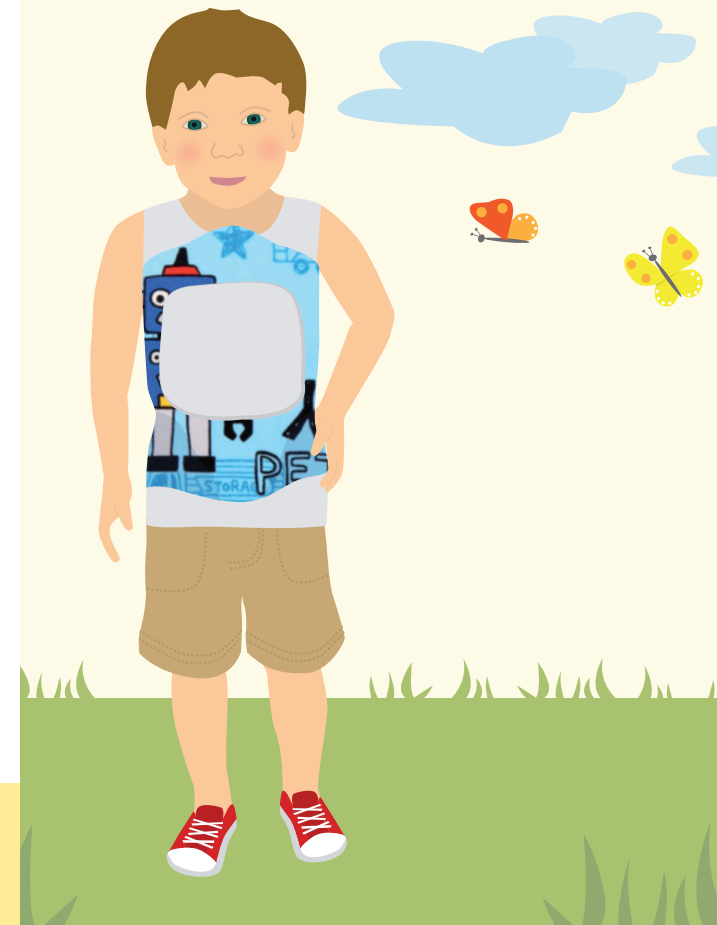
For more information, contact the Technical Aids Program Secretary at:

514 374-1710, extension 8022

### Brochure prepared by:

The Technical Aids Program's team of orthotic and prosthetic technicians.

The moulded plastic corrective spinal brace is used primarily to ensure better alignment of the spine. In some cases, it helps provide greater comfort when sitting in a wheel chair.





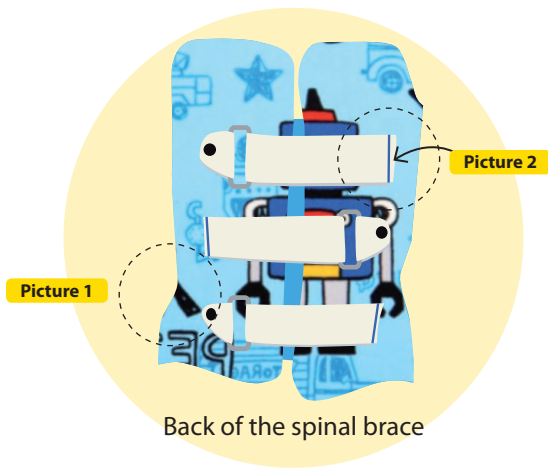
## With the children and their family

### Progressive spinal brace wearing

When the child receives the spinal brace, it is important that he or she begins wearing it only for short periods (about one hour) to check for discomfort or redness. Any redness should go away in under 20 minutes. If it doesn't, contact the Orthotist.

### Checking the installation of the brace

With the child lying on his or her back, the brace needs to be firmly pressed above the iliac crests, at the waist (picture 1). The straps need to be tightened to the marks made by the Orthotist (picture 2).



Back of the spinal brace

### IMPORTANT

The child must always wear a fitted cotton undershirt with no side seams under the brace.



### Hygiene and maintenance

Both the inside and outside of the brace can be washed with water and mild soap. It is important to rinse it thoroughly, wipe it and air dry it completely before wearing it again.

### When to adjust or renew the spinal brace

When the brace:

- causes redness, pain, skin rashes or swelling;
- seems too small or too big; OR if: \_\_\_\_\_  
\_\_\_\_\_
- the child's condition has changed.

Contact the Technical Aids Program. A visit to the doctor may be in order. If a renewal is necessary, you will need a new prescription.

### Costs and responsibilities

The corrective spinal brace is covered by the Régie de l'assurance maladie du Québec (RAMQ) and guaranteed for three months following reception. The Technical Aids Program handles any adjustment or repair during this period. Should the client decide to deal with another laboratory during this period, fees may apply or the laboratory may refuse to perform the work.

In cases of negligence (including loss, theft and deformation caused by heat) when using the corrective spinal brace, the client is responsible for replacement fees